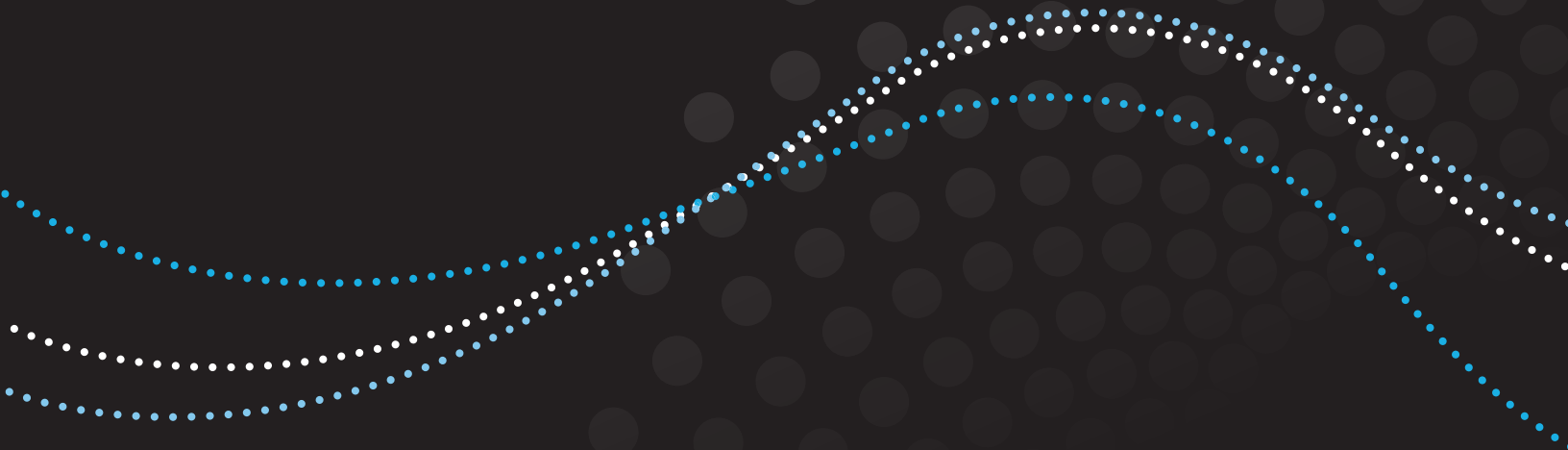




OWNER'S MANUAL



Important Safety Instructions



THIS SYMBOL MEANS 'CAUTION.' When using an electrical appliance, basic precautions should always be followed, including the following:

WARNING:




THIS SYMBOL MEANS 'PLEASE READ ALL INSTRUCTIONS BEFORE USING THIS UNIT.'


IPX4

IPX4 IS THE DEGREE OF PROTECTION AGAINST INGRESS OF WATER.

1. Use the Rainbow and its attachments and accessories only as described in this manual. Use only attachments recommended by the manufacturer.
2. To reduce the risk of electric shock, use indoors only.
3. Do not vacuum up anything that is burning or smoking, such as cigarettes, matches or hot ashes. Do not use to vacuum up flammable or combustible liquids, such as gasoline or use in areas where they may be present.
4. When using the Rainbow as a vacuum cleaner, do not leave the Rainbow unattended when plugged in. Unplug from outlet when not in use. To reduce the risk of injury from moving parts, unplug before cleaning, maintenance, or servicing, or when connecting other Rainbow attachments.
5. Switch off the Rainbow before unplugging from outlet.
6. Do not unplug by pulling on cord. To unplug, grasp the plug, not the cord.
7. Do not handle the Rainbow or plug with wet hands.
8. Do not pull or carry by cord, use cord as a handle, close a door on cord, or pull cord around sharp edges. Do not run the Rainbow over cord. Keep cord away from heated surfaces.
9. Do not use with damaged cord or plug. If the supply cord is damaged, it must be replaced by the manufacturer, its service agent or similarly qualified person in order to avoid a hazard. If appliance is not working as it should, has been dropped, damaged, left outdoors or dropped in water, return it to a service center.
10. Do not insert any object into openings on the Rainbow unit. Do not use if any openings are blocked; keep openings free of dust, lint, hair and any other materials that may reduce airflow.
11. Keep hair, loose clothing, fingers and all parts of body away from openings and moving parts.
12. Use extra care when cleaning on stairs.
13. Do not immerse the Rainbow or hose in water or other liquids during use or cleaning. To reduce the risk of electric shock, do not use any motorized nozzle on wet surfaces -- use only on carpet moistened by the ordinary, approved cleaning process.
14. To reduce risk of fire and electric shock due to internal component damage, use only Rainbow cleaning products intended for use with this appliance.
15. The hose contains electric wires and connections. To reduce the risk of electric shock, do not use when damaged, cut or punctured. Avoid vacuuming up sharp objects. In order to reduce the risk of electric shock, do not use or attempt to repair a damaged hose or use any other type of hose as a substitute. Servicing of the wet pick up electric hose requires extreme care and knowledge of its construction. Servicing of a wet pick up electric hose should be done only by qualified service personnel.
16. The hose must be examined periodically for visible deterioration, such as abrasions, cracks, splits and other wear or damage.
17. The hose is to be used only for indoor household carpet cleaning applications using only manufacturer-recommended cleaning solutions.

18. The Rainbow utilizes double insulation. A double-insulated appliance is marked with one or more of the following: The words “DOUBLE INSULATION” or “DOUBLE INSULATED” or the double insulation symbol (square within a square). In a double-insulated appliance, two systems of insulation are provided instead of grounding. No grounding mechanism is provided on a double-insulated appliance, nor should a means for grounding be added to the appliance. Servicing of a double-insulated appliance requires extreme care and knowledge of the system and should only be done by qualified personnel. Replacement parts for a double-insulated appliance must be identical to the parts they replace. 
19. Always turn off the Rainbow before connecting or disconnecting the hose or any motorized nozzle.
20. Do not use without filters in place.
21. The Rainbow is equipped with an interlock switch located in the water basin baffle area that prevents the appliance from operating if the water basin is not properly installed and latched. Do not bypass or defeat the interlock system.
22. Do not plug the Rainbow into a receptacle of an incandescent light fixture or use with an extension cord. Do not use with portable transformers or voltage converters. Do not use to pick up flammable or combustible liquids, such as gasoline or use in areas where they may be present.
23. To reduce the risk of electric shock, the Rainbow has a polarized plug (one blade is wider than the other). This plug will fit in a polarized outlet only one way. If the plug does not fit fully in the outlet, reverse the plug. If the plug still doesn't fit into the receptacle, contact a qualified electrician to install the proper outlet. Do not change the plug in any way.
24. The Rainbow can be used by children aged 8 years and above and persons with reduced physical, sensory, or mental capabilities or lack of experience and knowledge, if they have been given supervision or instruction concerning use of the Rainbow in a safe way, and if they understand the hazards involved. Children should be supervised to ensure that they do not play with the Rainbow. Cleaning and user maintenance shall not be performed by children without supervision.
25. Do not plug the Rainbow into a receptacle of an incandescent light fixture or use with an extension cord. Do not use with portable transformers or voltage converters.
26. This is a professional high-power piece of equipment and can cause electromagnetic interference. Please contact your local utility company regarding any special supply connection requirements.

Servicing of Double-Insulated Appliance

In a double-insulated appliance, two systems of insulation are provided instead of grounding. No grounding means is provided on a double-insulated appliance, nor should a means for grounding be added to the appliance. Servicing a double-insulated appliance requires extreme care and knowledge of the system and should be done only by qualified Rainbow service personnel. Replacement parts for a double-insulated appliance must be identical to the parts they replace. A double-insulated appliance is marked with the words “DOUBLE-INSULATION” or “DOUBLE-INSULATED.” The Symbol (square within a square) may also be marked on the appliance. Any servicing other than cleaning should be performed by an Authorized Rainbow Distributor or Service Center. 

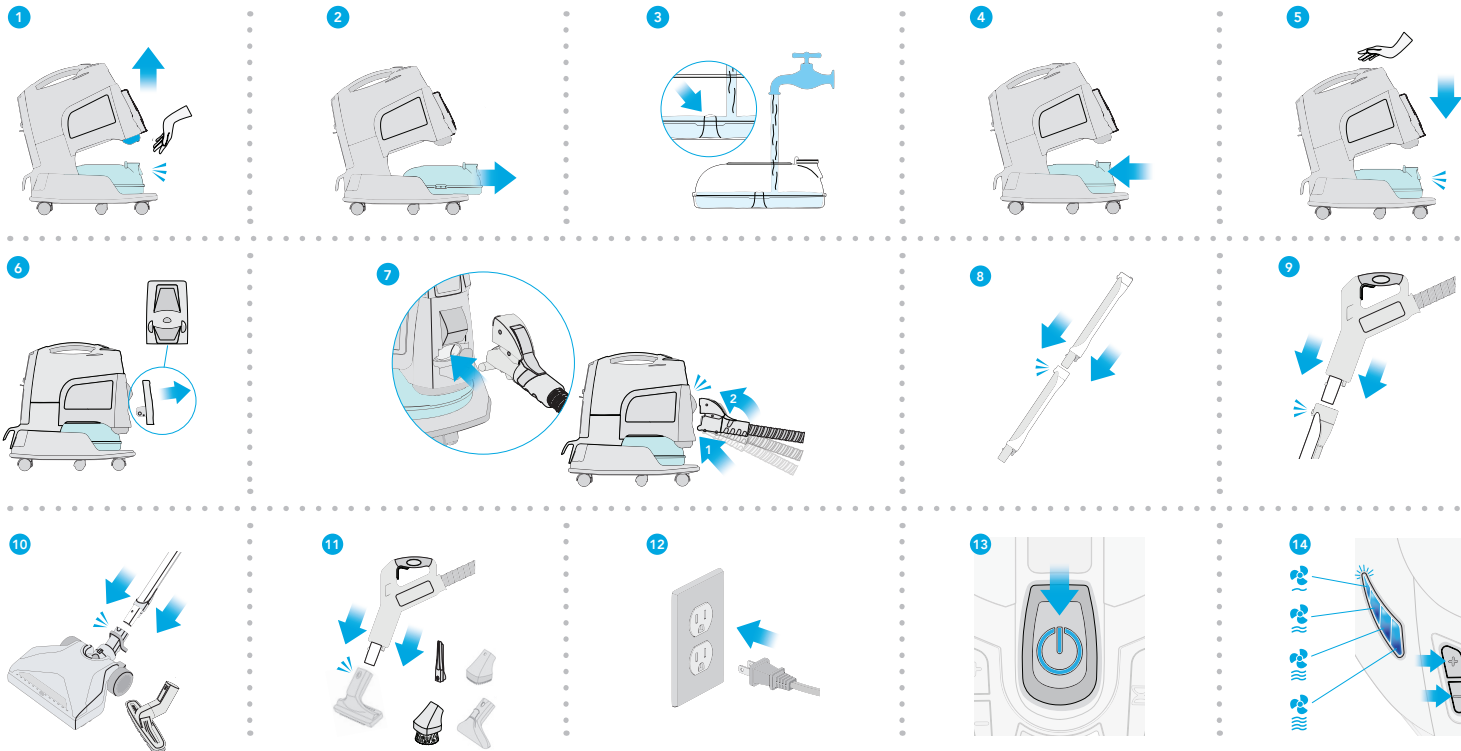
**SAVE THESE
INSTRUCTIONS**

**THE RAINBOW IS INTENDED FOR HOUSEHOLD USE ONLY.
USE THE RAINBOW ONLY AS DIRECTED IN THIS OWNER'S MANUAL.**

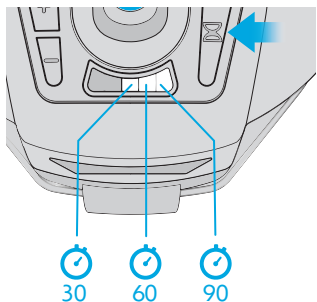
Quick Start Guide

In just a few quick steps, you'll have your Rainbow assembled and ready to begin cleaning.

Visit rainbowsystem.com for video tutorials.



Air Cleaning Mode



Air Cleaner Timer

Press timer button  to select 30, 60 or 90-minute air cleaner setting.

Press timer button  one more time to turn off the timer mode.



Independently Tested.
Consumer Trusted.

The Rainbow® Cleaning System provides **certified air cleaning** to your home environment. The Association of Home Appliance Manufacturers (AHAM) certifies that the Rainbow is a proven air cleaner designed to reduce air pollutants that contribute to poor indoor air quality.

For fresh, water-washed air...

The Rainbow not only cleans your floors and furnishings, it cleans the air! Simply add water to the basin, position the Rainbow in the center of a room and run in low-speed mode. The Rainbow will remove heavy odors, airborne dust and other particles from the air, trapping them in the water.

To deodorize...

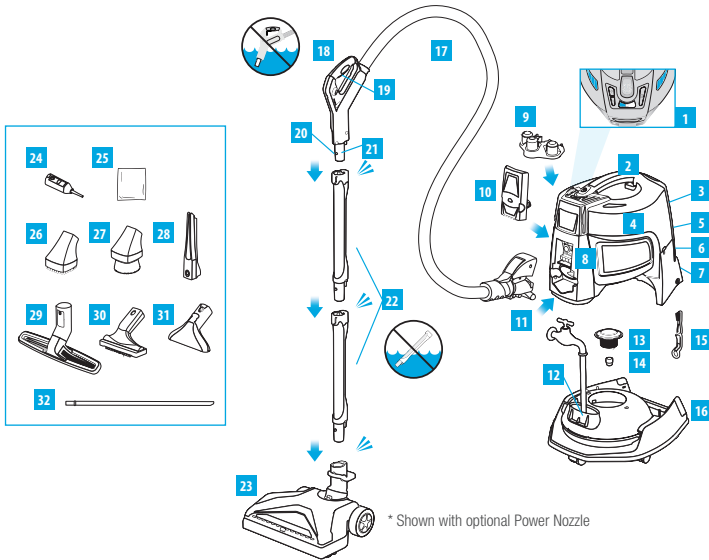
Use Rainbow Fresh Air Solution*. Before using the Rainbow, simply add one capful of Rainbow Fresh Air Solution to the water in the basin. The Rainbow will quickly circulate and refresh the air in the entire area while you clean, alleviating many objectionable household odors.

To aromatize...

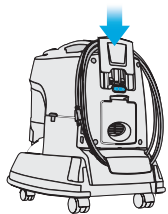
Use Rainbow fragrances*. Add a few drops of any Rainbow fragrance to the water in the basin. Place the Rainbow in the center of the room and run in low-speed mode. In a matter of minutes, a pleasant fragrance will permeate your home.

* Available as an optional accessory. For more information, contact an Authorized Rainbow Distributor.

Get Acquainted With Your Rainbow®



- | | |
|----------------------------|--|
| 1. Control Panel | 18. Hose Handle |
| 2. Handle | 19. Hose Handle Trigger |
| 3. Cord Wrap | 20. Hose Handle Release |
| 4. Power Unit | 21. Hose Handle Wand |
| 5. Exhaust Vent Plate | 22. Cleaning Wands |
| 6. Exhaust Air Opening | 23. Power Nozzle* |
| 7. HEPA Neutralizer | 24. Confined Space Cleaner & Inflator Tool |
| 8. Air Inlet Opening | 25. Cushion Bag |
| 9. Attachment Caddy | 26. Pet Tool |
| 10. Airflow Adapter | 27. Dusting Brush |
| 11. Upright Release Button | 28. Crevice Tool |
| 12. Water Basin | 29. Floor & Wall Brush |
| 13. Separator | 30. Upholstery Tool |
| 14. Separator Nut | 31. Wet pickup/Extractor Head |
| 15. Separator Wrench | 32. Refrigerator Coil Cleaner |
| 17. Electrified Hose | |



Power Cord Storage

Push the button to use the built in cord wrap. Wrap cord as illustrated. To release the power cord, push down on the sliding cord wrap device.

To purchase accessories or replacement parts, please contact an Authorized Rainbow Distributor.

A Complete Home Cleaning Solution

The Rainbow's wide assortment of cleaning tools provide the power and versatility to clean practically everything around your home.

ATTACHMENT	Furniture	Between cushions	Window Treatments	Stairs	Bare Floors	Carpeted Floors & Rugs	Walls	Hard-to-Reach Spaces	Spills & Stains	Pets
Dusting Brush	✓		✓							
Upholstery Tool	✓		✓	✓						
Crevice Tool	✓	✓		✓				✓		
Floor and Wall Brush				✓	✓		✓			
Inflator / Confined-Space Cleaner		✓						✓		
Wet Pickup/Extractor Head									✓	
Pet Tool										✓

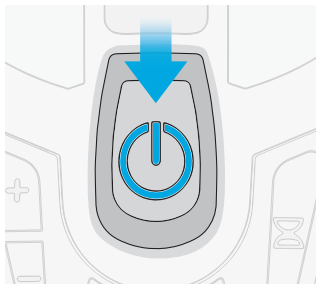


⚠ WARNING: The hose contains electric wires and connections. To reduce the risk of electric shock: Do not immerse. Do not use or repair a damaged hose. Use only on carpet moistened by cleaning process.

⚠ CAUTION: Always clean attachments before using on fabrics. To avoid abrasions to delicate surfaces, keep the dusting brush bristles clean.

⚠ CAUTION: Do not use attachments to clean flat-screen televisions or computer screens.

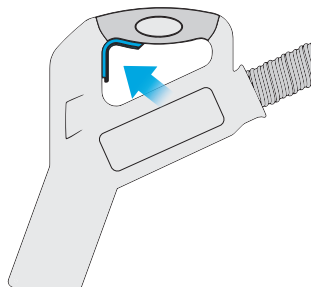
Power and Control at Your Fingertips



Power Switch

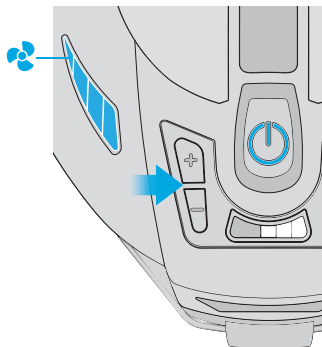
To power on the unit, press down on the main power button. The Rainbow will always start in high speed.

To power off the unit, press down on the main power button.



Handle Trigger

Pull up on trigger to activate the electrified hose when using the optional Power Nozzle, RainbowMate, RainJet, MiniJet or AquaMate.

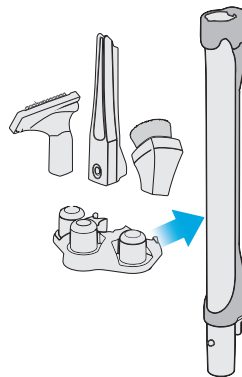
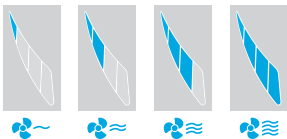


4-Level Airflow Control

- + Press to increase fan speed
- Press to decrease fan speed

Airflow Indicator Lights

Fan speed levels:

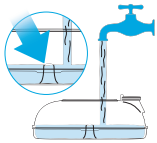


Attachment Caddy

Bring along your most used tools as you clean from room-to-room using the convenient onboard Attachment Caddy. Attach to the front of the Rainbow by slipping over the front of the housing into notches located on either side. Press downward to lock in place. Attachments are stored by slipping them over the posts on the caddy. The attachment caddy can also be attached to the wand.

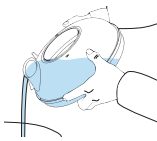
Proper Use and Care

Following a few basic maintenance routines will help provide you with years of trouble-free service from your Rainbow Cleaning System. Neglecting all or part of these instructions may lead to decreased cleaning efficiency and potentially unnecessary service expenses.



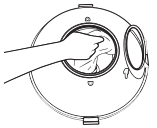
Change the water when dirty...

Do not clean too long with one filling of water. Check water during cleaning, and if water becomes too thick with lint and dirt, empty water basin and add fresh, clean water. **For correct water level, fill to top of post in center of water basin.**

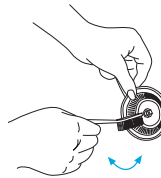


Always empty and clean the basin...

Immediately after using the Rainbow, remove the water basin and pour out the dirty water through the air intake opening. Heavier particles will settle to the bottom of the basin as the water is poured. Once water is poured, remove the remaining heavier debris and dispose. Then wash the water basin with soap and water. Rinse and dry thoroughly. If water basin is stored within Rainbow unit, unit must be left in 'open' position to allow parts to dry thoroughly.



⚠ CAUTION: Always remove, empty and wash the water basin when cleaning job is finished. This helps to avoid odors, growth of germs and bacteria and the development of water scum in the basin. Hand wash only. Not dishwasher safe.



Clean the separator...

For best performance, remove and clean the separator frequently. If necessary, use the supplied Rainbow Separator Brush/Wrench to loosen the nut. Clean the separator inside and out with soap and water using the Rainbow Separator Brush. Clean and dry the flange under the separator. Immediately after cleaning, dry and replace the separator. Hand-tighten the separator nut. Do not force the separator onto the threaded shaft.

⚠ WARNING: Always replace the separator immediately after cleaning (hand-tighten only). Do not operate the Rainbow without the separator.

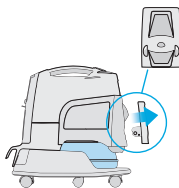


Clearing an obstruction from the hose...

If you notice decreased airflow when using the hose, the hose may have become clogged. **To clear the obstruction, turn off Rainbow and disconnect from power source.** Then, remove the exhaust vent door on the rear of the Rainbow. Connect the hose coupling to the exhaust air opening, making sure it is securely locked into place. Place the hose handle wand into the air intake opening on the front of the Rainbow. Turn the Rainbow on and jiggle the hose. Any dirt stuck in the hose will be trapped in the Rainbow water basin.

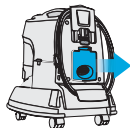
Proper Use and Care

Using the Airflow Adapter...



The Rainbow Airflow Adapter reduces air noise through the air inlet opening. It is recommended that the adapter be used when the Rainbow is used as a blower or inflator. Simply snap the Airflow Adapter into the air inlet opening before using the Rainbow as a blower or inflator.

To inflate or blow air...

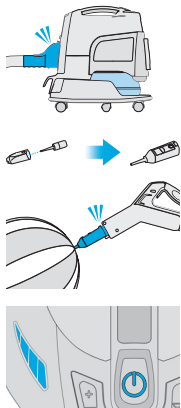


Use the inflator tool. The Rainbow inflator tool works great for quickly inflating air mattresses, beach balls and other inflatable toys.

⚠ WARNING: Be sure inflator pin is properly locked in place. If not, it will be blown forcefully from the tool body.

INSTRUCTIONS:

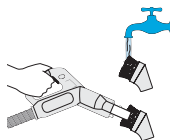
1. Remove the rear exhaust panel on the Rainbow.
2. Attach Rainbow hose to the rear exhaust opening.
3. Set Airflow Control Setting on trigger to FULL POWER.
4. Attach inflator tool to hose handle.
5. Carefully insert the inflator pin into the inflator stem of the object to be inflated.
6. Turn Rainbow switch to HIGH.



⚠ CAUTION: Always clean attachments before using on fabrics. To avoid abrasions to delicate surfaces, keep the dusting brush bristles clean.

⚠ CAUTION: Do not use attachments to clean flat-screen televisions or computer screens.

Cleaning the attachments...



The floor and wall brush, dusting brush and upholstery tool can be whisked clean with the open end of the Rainbow hose while the Rainbow is running; or remove attachment and clean in warm, soapy water. Allow to dry before replacing. If bristles wear out or become damaged, contact your local Authorized Rainbow Distributor for replacement.

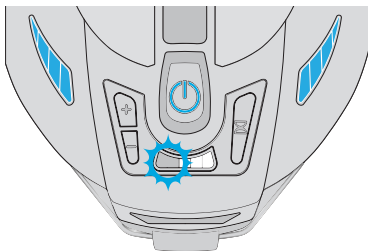
Using the Cushion Bag



This handy plastic bag removes stale, dusty air from cushions and pillows and is sized to fit even your largest cushions. Begin by placing a cushion in the bag. With the upholstery tool attached to the end of the hose handle wand, hold the cushion bag tightly in place around the wand, turn on the Rainbow and watch as stale, dusty air is sucked out. Without letting go of the bag at the wand, disconnect the hose from the front of the Rainbow and attach to the Rainbow's exhaust air opening. Your cushion is now being "fluffed" with clean, water-washed air.

Troubleshooting Guide

Your Rainbow® is equipped with features to sense and alert the user to abnormal conditions. The red fault light to the left of the timer lights will either illuminate solid or blink, depending on the system affected.



A **BLINKING LIGHT** represents an issue with the hose or powered accessories.

A **SOLID LIGHT** represents an issue with the main canister unit.

INDICATOR LIGHT CODE	POTENTIAL CAUSE	CORRECTIVE ACTION
Blinking Light	Power Nozzle brush roller is obstructed.	Turn unit off / unplug unit. Remove debris from Power Nozzle brush roller. Resume normal operation.
Continuous Solid Light	Electrical connections are wet.	Turn unit off / unplug unit. Dry electrical connections. Resume normal operation.
	Water basin is overfilled.	Turn unit off / unplug unit. Remove water basin. Verify that water level is even with the rounded post in the inside center of the water basin.
	Operating motor temperature is high.	Turn unit off / unplug unit. Allow unit to cool off for 5 minutes. Check for clogged hose, filter or Power Nozzle.
	Main unit is not latched to water basin.	Latch main unit to water basin.
	Motor cannot spin due to debris between motor housing and separator.	Clean around the separator.

**If the corrective action does not fix the problem:
Contact an Authorized Rainbow® Distributor or Service Center.**

Troubleshooting Guide

This Rainbow appliance has been thoroughly tested and inspected. If a minor issue develops, the following troubleshooting procedures may help identify and correct the matter. If you are unable to resolve the issue, contact an Authorized Rainbow Distributor for service. Any service procedure not listed below should be performed by an Authorized Rainbow Distributor or Service Center.

⚠ WARNING: Disconnect electrical supply before performing any maintenance to the unit. Failure to do so could result in electrical shock or personal injury.

ISSUE	POSSIBLE CAUSE	POSSIBLE SOLUTION
The Rainbow motor is not running	Rainbow not properly latched to water basin	Ensure Rainbow is properly seated and latched onto water basin
	Not firmly plugged in	Plug unit in firmly or try another outlet
	Timer mode has ended (all three timer lights will blink)	Turn unit off with main power switch
	None of the above	Contact an Authorized Rainbow Distributor or Service Center
Noticeably reduced airflow	Plugged hose, wand, attachment or Power Nozzle	Remove obstruction from clogged area
	HEPA Neutralizer needs servicing or replacement	Remove HEPA Neutralizer and clean or replace
	Rainbow is running on low speed	Increase the airflow using 4-Level Airflow Control
	Separator is clogged or dirty	Remove separator and clean (See page 8)
Unit discharges dust	Low level of water in basin	Fill water basin to correct level
	Excessively dirty water in basin	Replace with clean water
	Hole in HEPA Neutralizer	Contact an Authorized Rainbow Distributor or Service Center
Heavy foaming in water basin	Soapy contaminant in water basin	Replace with clean water

Troubleshooting Guide

ISSUE	POSSIBLE CAUSE	POSSIBLE SOLUTION
Unit discharges a musty odor	High level of water in basin	Empty water basin and refill to correct level
	Water basin not cleaned or dumped after use	Clean water basin and use Rainbow Fresh Air solution while cleaning
	Separator clogged or dirty	Remove separator and clean (See page 8)
	Damp HEPA Neutralizer	Remove HEPA Neutralizer and clean or replace
	Rainbow stored on water basin	Do not store Rainbow on water basin
Unusual tone, noise or vibration	Separator clogged or dirty	Remove separator and clean
	Water level is above center post in water basin	Empty water basin and refill to correct level

Customer Care Number

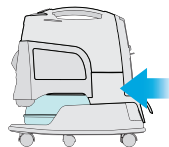
As part of Rexair's Customer Care program, each Rainbow and Power Nozzle receives a Customer Care serial number only after passing Quality Control assurance testing. This serial number provides:

- ✓ Ownership identification for you
- ✓ Warranty identification for your Distributor
- ✓ Assurance of passing Quality Control testing
- ✓ Assurance of "factory-fresh" condition

For future reference, record the serial number in the space provided below. No authentic, new Rainbow or Power Nozzle should be sold without this number. If the serial number is missing, Rexair makes no claim as to the origin, age, or condition of the unit. If you are unable to locate a serial number on your Rainbow or Power Nozzle, please contact Rexair's Customer Service Department.

RAINBOW SERIAL NUMBER

Model: RHCS2019 [SRX]



YOUR AUTHORIZED RAINBOW DISTRIBUTOR

NAME	
ADDRESS	
CITY/STATE/POSTAL	
PHONE	
E-MAIL	

←

Contact your local Authorized Rainbow Distributor for advice on caring for your Rainbow, warranty coverage, replacement parts and service information.

Buyer Beware

Rexair sells the Rainbow to its independent Authorized Rainbow Distributors for resale by those Distributors and their agents. When you purchase a Rainbow, you are buying many years of product development, continuous improvement and ingenuity. Plus, your Rainbow is supported by Rexair LLC and by your local Independent Authorized Rainbow Distributor. While Rexair sympathizes with customers who have been taken advantage of by unauthorized sellers, Rexair stands behind its Authorized Distributors and can only offer assistance to customers who have purchased through authorized channels.



Rexair is a proud member of the Direct Selling Association and adheres to the DSA's Code of Ethics.



50 W. Big Beaver Road
Suite 350
Troy, Michigan 48084
United States of America

(248) 643-7222
rainbowsystem.com

Limited Warranty

Rexair provides to its independent Authorized Rainbow Distributors, and only to them, a written four (4) year warranty on the Rainbow Cleaning System and attached accessories and a ten (10) year warranty on the vacuum cleaner motor/electronic controller. Replacement parts can be new or remanufactured as provided at Rexair's sole discretion. These warranties do not cover normal wear-and-tear arising from usage of the products. Even though Rexair, as the manufacturer, does not deal directly with the consumer nor provide the consumer with a written warranty, the law imposes certain responsibilities on all manufacturers who make consumer products. The products must not be defective and must be generally fit for their intended uses. These implied warranties of merchantability and fitness are honored by Rexair. Further, Rexair requires each Authorized Distributor to pass through to the consumer, by way of the Authorized Distributor's own written warranty, the benefit of Rexair's warranty to such Distributor.

The manufacturer, Rexair, has established a proud heritage of selling a superior product through independent Authorized Distributors for more than 80 years, and is committed to the service and support of Rainbow owners.

Rexair sells the Rainbow Cleaning System only to independent Authorized Distributors who are experienced in direct in-the-home selling. These Authorized Distributors assume responsibility for the legitimate distribution and service of the Rainbow Cleaner directly through their own dealers, or indirectly through independent sub Distributors and their dealers.

Rexair has no agreement or legal relationship with the independent resellers who acquire products directly or indirectly from an Authorized Distributor, and can only attempt to correct any customer complaints about such resellers by acting through the responsible Authorized Distributor. Rexair's announced policy is to hold each Authorized Distributor responsible for remedying any complaint from any member of the buying public relating to sales or service by any of these independent resellers.

Rexair further requires that each Authorized Distributor make prompt and workmanlike service available through its own service outlets or through responsible independent service outlets in those communities in which it sells Rexair products through its independent sub Distributors and dealers.

Do not lose the name and address of the Dealer or Distributor from whom you bought the Rainbow Cleaner. Contact him or her for advice on caring for your Rainbow, warranty coverage, service and the nearest service outlet. If you are unable to contact them, or feel you are not receiving proper assistance from the Authorized Distributor, feel free to contact Rexair's customer service department for assistance. They will provide you the name, address and phone number of an Authorized Distributor for your area.

© 2019 Rexair LLC, all rights reserved. Rainbow®, RainbowMate®, MiniJet®, JetPad®, RainMate®, RainJet®, AquaMate®, Rexair®, The Power of Water®, Wet Dust Can't Fly® and the configuration of the Rainbow® Cleaning System are registered trademarks of Rexair LLC, Troy, Michigan, United States.

Manufactured in the United States with U.S. and imported parts.



rainbowsystem.com

Rexair LLC | Troy, Michigan

© 2019 Rexair LLC | R17419A-0 EU